



® Automobili Lamborghini S.p.A.

The information and procedures published below are strictly confidential and exclusively for the Lamborghini Dealer Network and Authorized Service Points. All copyrights are property of Automobili Lamborghini S.p.A based on copyright law. All of the PDF chapters in the WEB workshop manuals described below are based on information available at the time of publication. The company reserves the right to make updates and modifications. The following are prohibited: reprinting, reproduction, forwarding to unauthorized people and/or third parties, and translation, including partial, without written authorization from Automobili Lamborghini S.p.A.

Parking brake

The parking brake operates on the rear wheels.

The calipers acting on the wheel disks are controlled by two steel cables through two pulleys and a rocker arm that ensures a uniform force distribution.

Parking brake (Fig.1)

- | | |
|----|--------------------|
| A. | Hand brake lever |
| B. | Pulleys |
| C. | Tie rod adjuster |
| D. | Left-hand tie rod |
| E. | Pads |
| F. | Caliper |
| G. | Right-hand tie rod |

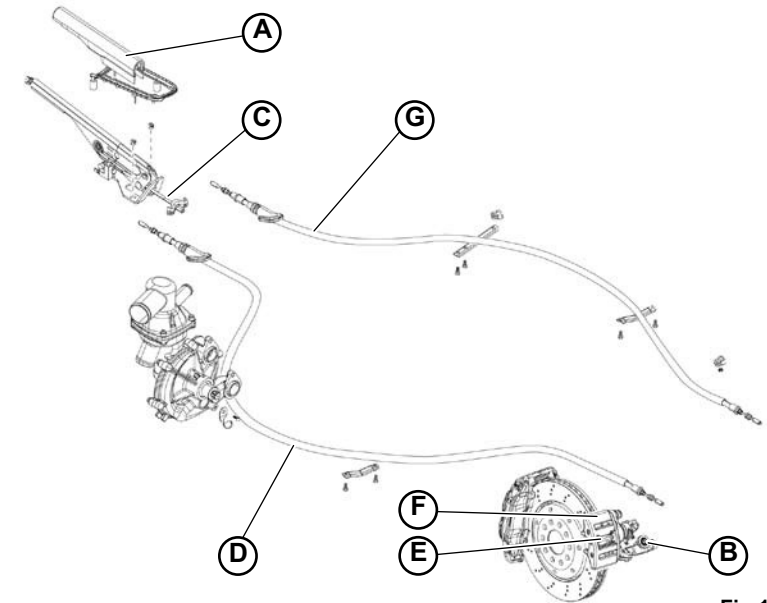


Fig.1